



Coastal Protection and
Restoration Authority of Louisiana

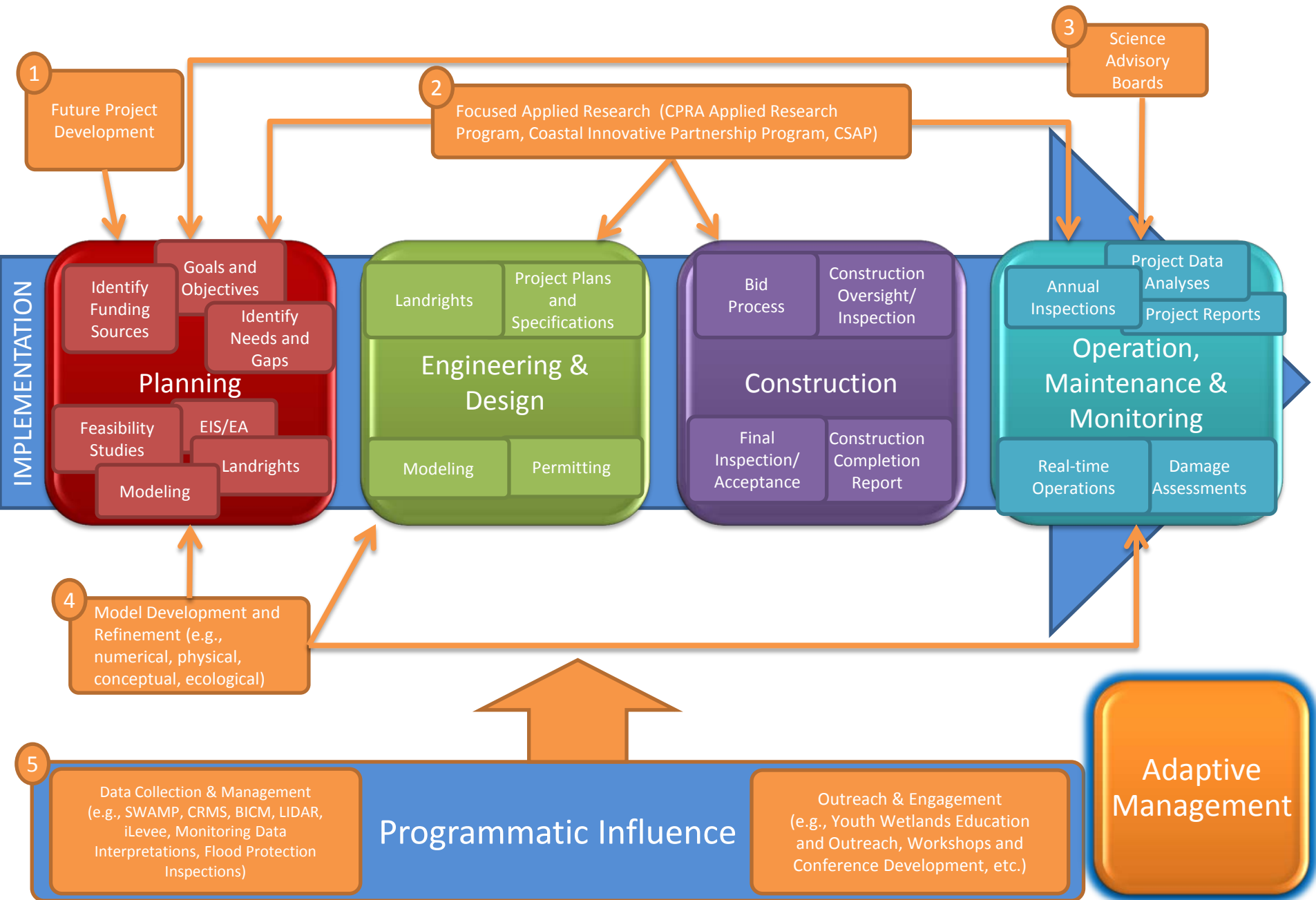
Monitoring Wetlands and Waters in Coastal Louisiana

Richard Raynie
*Coastal Protection and
Restoration Authority*

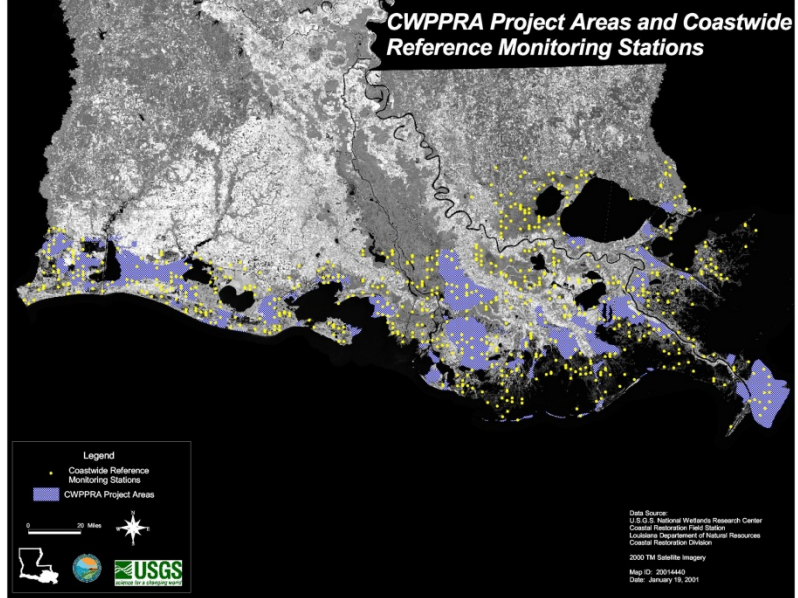
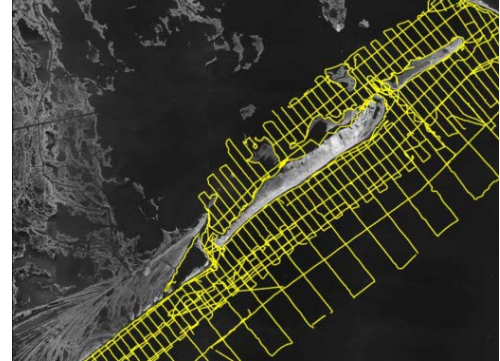


committed to our coast

CPRA Program Implementation



Monitoring Program Evolution



CWPPRA Restoration Projects

Project Specific to Programmatic Monitoring

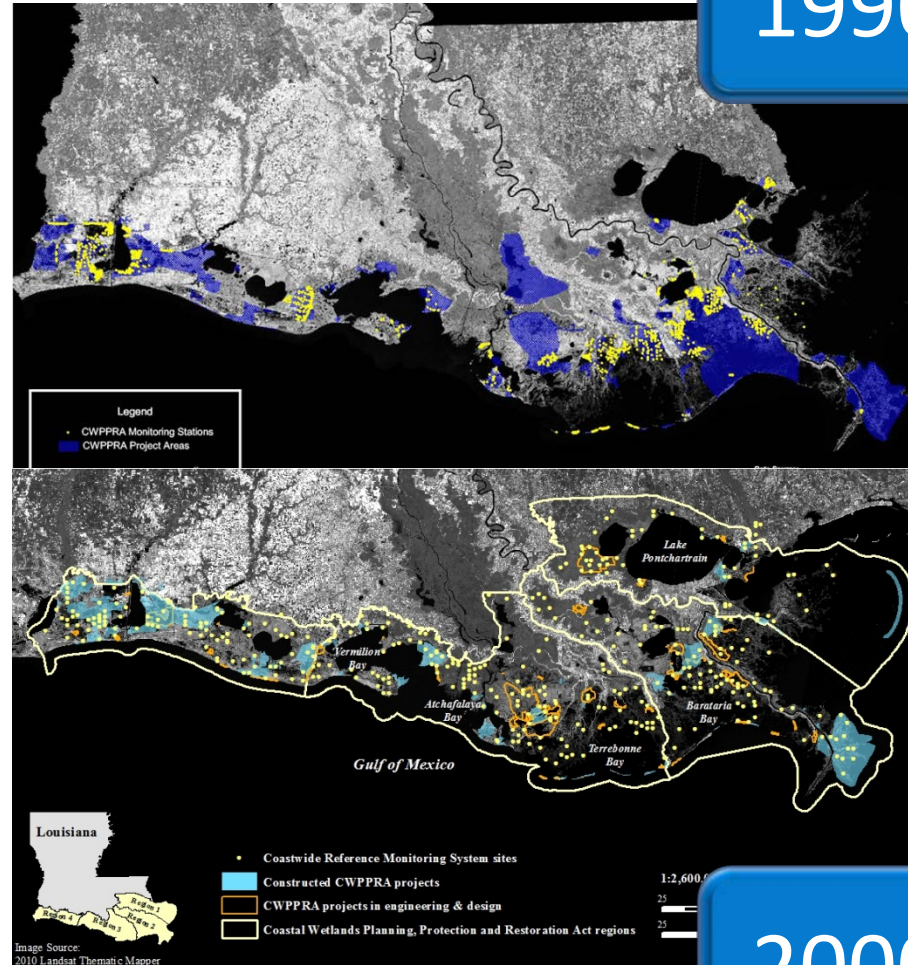
Project-Specific

- Inconsistent variables
- Short term data records
- Inadequate spatial coverage
- Unsuitable or no reference areas

Programmatic (CRMS)

- Coverage in all marsh types
- Consistent variables
- Monitoring sites inside and outside of project boundaries
- Provides improved baseline for unconstructed projects
- Population of reference sites
- Evaluate wetlands at multiple scales

1990's



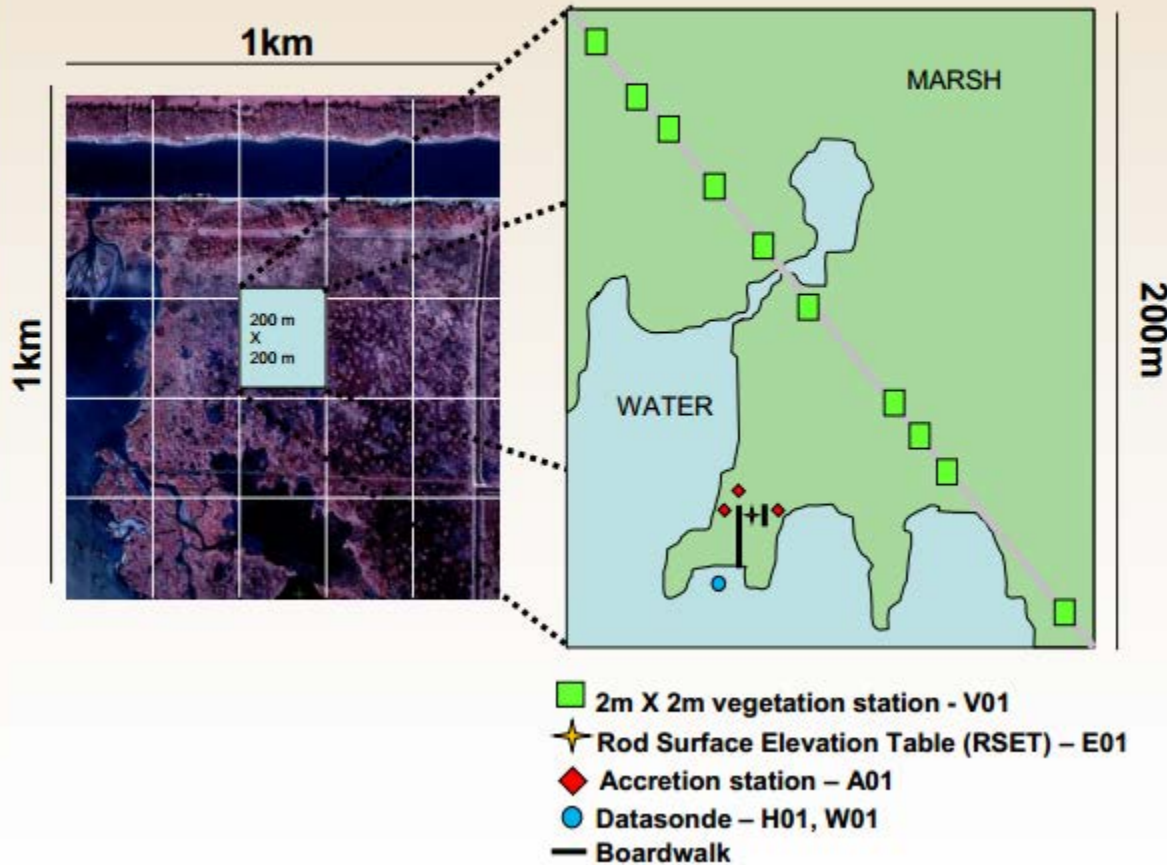
2000's

Coastwide Reference Monitoring System (CRMS) Site Design

2000's

Spatial data collection

Non-spatial data collection



Typical Marsh Site



Typical Swamp Site

Barrier Island Comprehensive Monitoring (BICM)

2000's

Aerial Photos –

Shoreline position – 1880's, 1920-30's, 1998, 2004, 2005

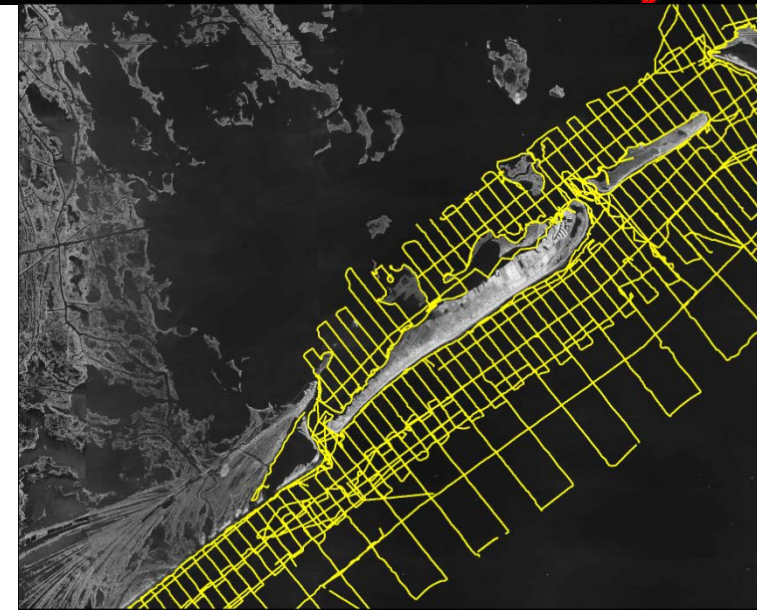
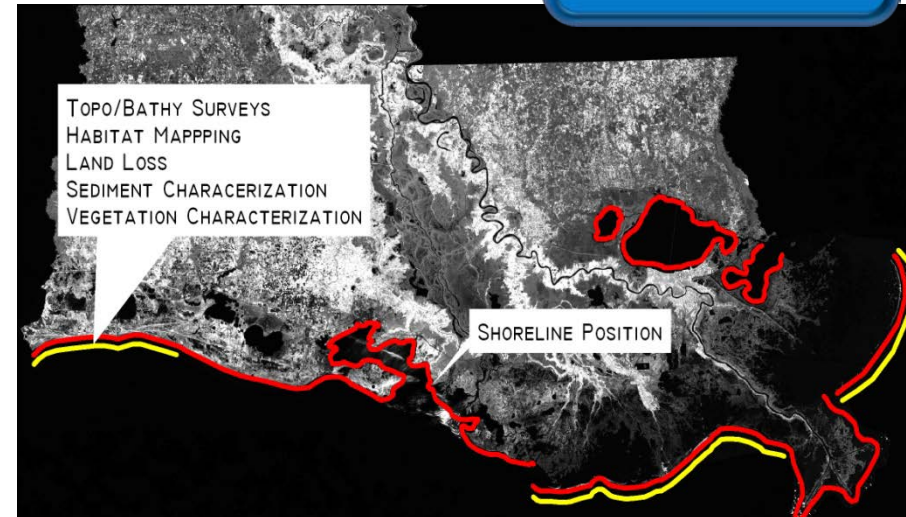
Habitat Mapping - (7 habitats – beach, marsh, bare land, barrier vegetation, inter-tidal, structure, water)

Land Loss

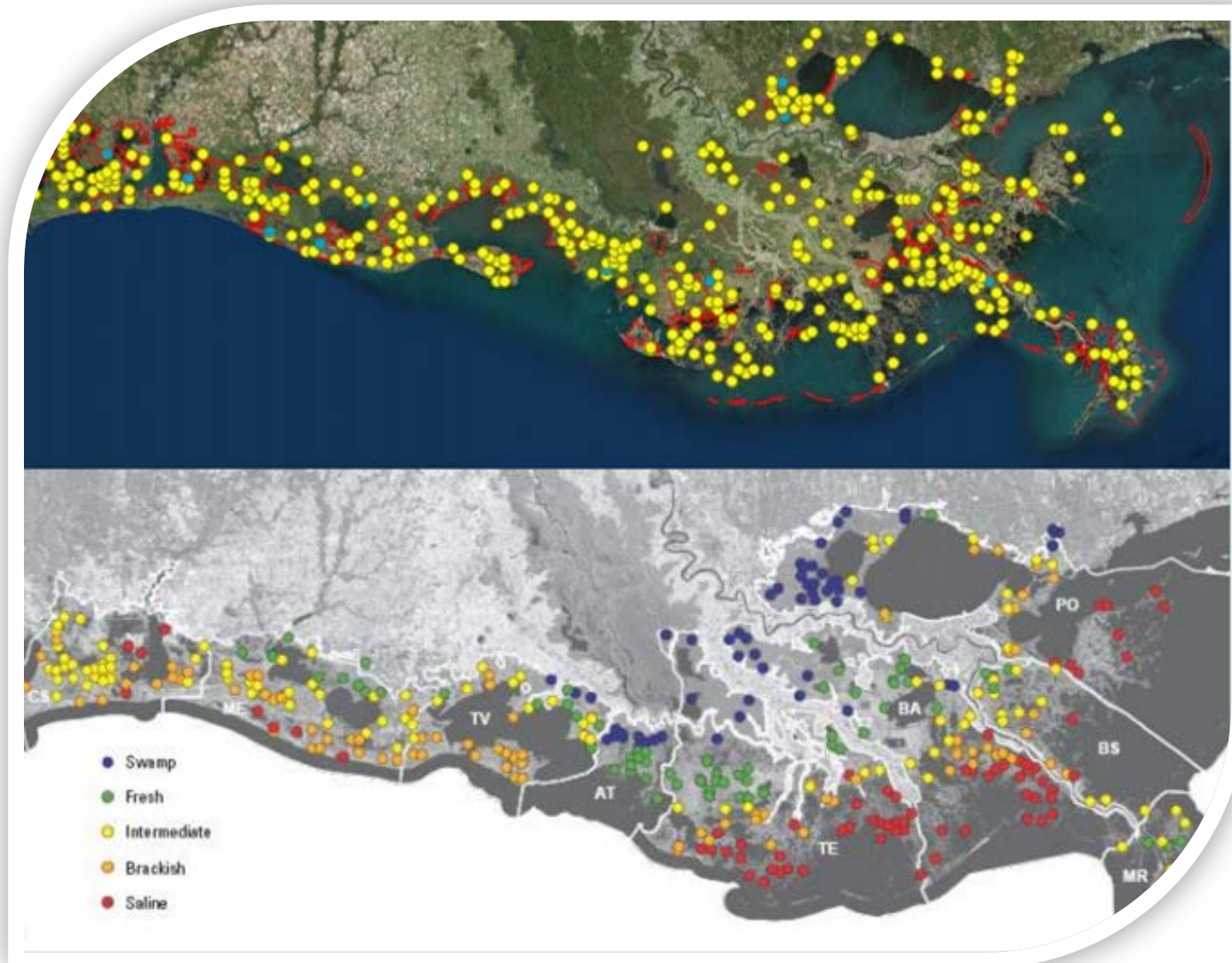
Topographic Surveys - LiDAR (entire sandy beach or entire island if not attached to headland)

Bathymetric Surveys - 1500' perpendicular line spacing bayside to 6600' offshore, 3000' and 6000' shore parallel lines, 2500' grid outside of 2 mi

Sediment Sampling - 7 grab samples from offshore DoC, cross-shore to bays



Data Management & Analytical Tools



Coastwide Reference Monitoring System(CRMS) Data Management

Coastwide Reference Monitoring System

a CWPPRA funded project

Home Data Mapping Library Visualization Program

Single-click the yellow symbology on the map to view CRMS Site information.

Layers Menu

- CRMS
- CWPPRA
- Hydro Basins
- Vegetation
- Soils
- Public Lands
- MP 2012
- Land/Water
- Base Layer

Info Water Vegetation Soil Spatial Report Card Tools

Site ID: CRMS0115
Lat, Long: 29.7809, -89.9167
Marsh Elevation: Floating GEOID99
CWPPRA Project:
IN: Caernarvon Diversion Outfall Management (BS-03a)
Type: Outfall Management

Data Availability: 2014

Pre/Post Construction Pictures:

- Preliminary Site Visit North
- Pre Construction
- Post Construction

[Survey Report](#)

Lacoast.gov/crms2/home.aspx

Long: -90.672, Lat: 30.031

Sources: Esri, DigitalGlobe, GeoEye, i-cubed, Earthstar Geographics, CNES/Airbus DS, USDA, USGS, AEX, Getm...

Water | Vegetation | Soil | Spatial | Report Card | Tools

Salinity | Water Level | Temperature | Hydro Index | Water Level Range

Mean 2013 Growing Season Salinity (March 1 - Nov 30): 0.81 ppt
Water Salinity (ppt) at the CRMS hydro station, CRMS0115-H01.

	3/20/13 - 3/20/14	Mar 1 - Jun 30	Jul 1 - Oct 31	Nov 1 - Feb 28
Min	0.25	0.25	0.58	0.32
Mean	0.72	0.33	1	0.65
Max	1.31	0.43	1.31	1.06

Interactive Hydro Chart

Water | Vegetation | Soil | Spatial | Report Card | Tools

Herbaceous | EQI | Marsh Classification

Vegetation Type: OLIGOHALINE WIREGRASS
Latest CRMS Veg Survey Date: 2013
Dominant Taxa: *Polygonum punctatum* Elliott
Percent Coverage of Dominant Taxa: 62.5
USDA Plants Database

Water | Vegetation | Soil | Spatial | Report Card | Tools

Marsh Elevation: Floating
CRMS Measured Bulk Density: 0.221 g cm³
NRCS Soil Type: Lafitte muck

Percent Organic | Bulk Density | Surface Elevation/Accretion/SV

Depth (cm)	0 - 4	4 - 8	8 - 12	12 - 16	16 - 20	20 - 24
% Avg Organic Matter	39.51	40.49	50.46	47.27	50.85	54.65
Error	±2.99	±4.67	±14.92	±10.59	±3.49	±7.84

Water | Vegetation | Soil | Spatial | Report Card | Tools

Land/Water | Maps | Aerial Photography

Land/Water 2012

	Acres	Percent
Land	42	16.94
Water	206	83.06
Flooded	0	0

Land Water

An error occurred while retrieving the landscape data.

Home | Data | Mapping | Library | Visualization | Program

Single click the yellow symbology on the map to view CRMS Site information.

Layers Menu

- CRMS
- CVPPRA
- Hydro Basins
- Vegetation
- Soils
- Public Lands
- MP 2012
- Land/Water
- Base Layer

Info | Water | Vegetation | Soil | Spatial | Report Card | Tools

Site ID: CRMS0115
Lat, Long: 29.7809, -89.9167
Marsh Elevation: Floating GEOID99
CWPPRA Project:
IN: Caernarvon Diversion Outfall Management (BS-03a)
Type: Outfall Management

Data Availability: 2014

Pre/Post Construction Pictures:

Preliminary Site Visit North

Pre Construction

Post Construction

[Survey Report](#)

LAcost.gov/crms2/home.aspx

Long: -90.672, Lat: 30.031

Sources: Esri, DigitalGlobe, GeoEye, i-cubed, Earthstar Geographics, CNES/Airbus DS, USDA, USGS, AEX, Getm...

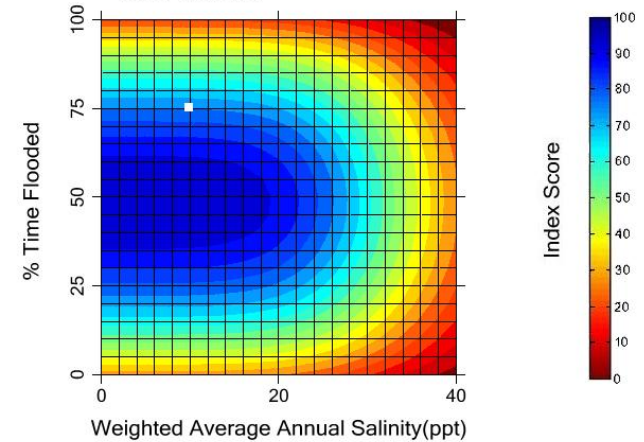
CRMS Indices

Comparison across multiple spatial scales

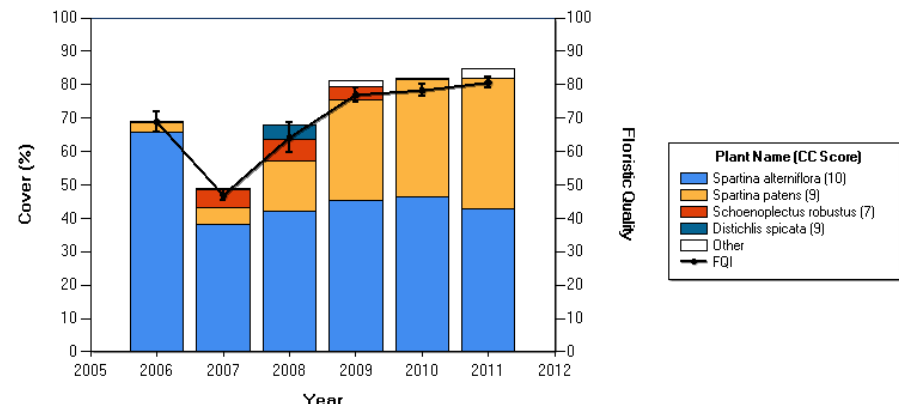
- **Hydrologic** – HI suitability of average salinity and % time flooded in maximizing vegetative primary productivity
- **Floristic Quality** - FQI Species assigned scores based on fidelity to a marsh type and whether they indicate wetland stability or disturbance

Hydrologic Index for 2010 Saline Marsh, CRMS6301

% Time Flooded: 75.21
Weighted Average Annual Salinity: 9.48 (ppt)
Index Value: 81

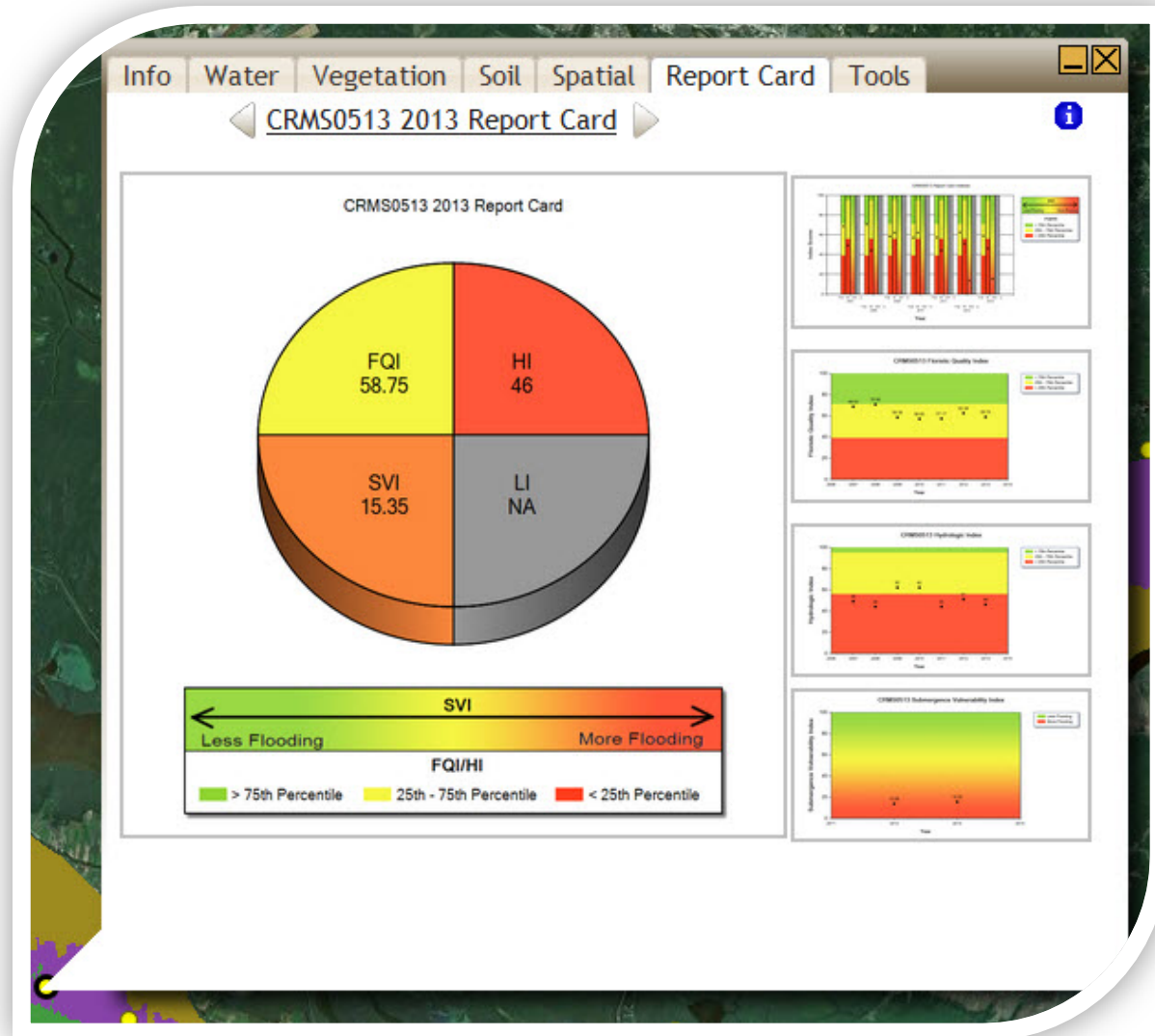


Floristic Quality Index for Saline Marsh, Site CRMS0685



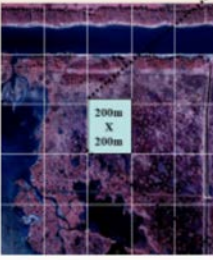
CRMS Report Cards

- Baseline period from 2006-2009 was established to assess existing distribution of index scores of all CRMS sites
- FQI=Floristic Quality
- HI=Hydrologic
- SVI=Submergence Vulnerability
- LI= Land Index (in development)

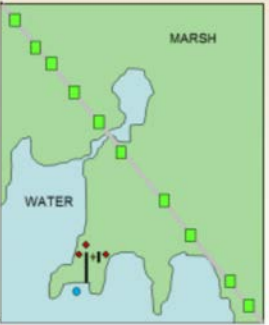


How are Data Utilized?

Spatial data collection



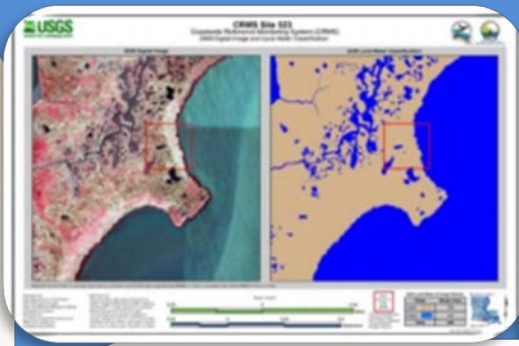
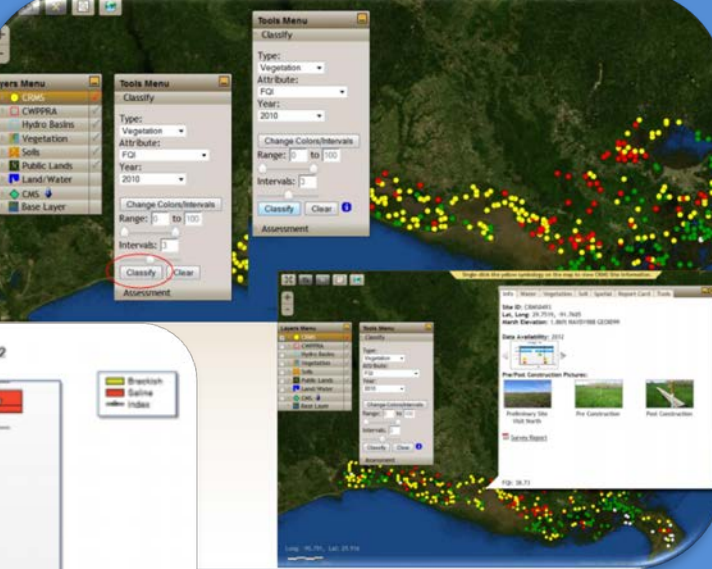
Non-spatial data collection



1km
200m
200m
MARSH
WATER

- 2m X 2m vegetation station
- Rod surface elevation table (RSET)
- Accretion station
- Hydrologic datasonde
- Boardwalk

Typical CRMS Marsh Site

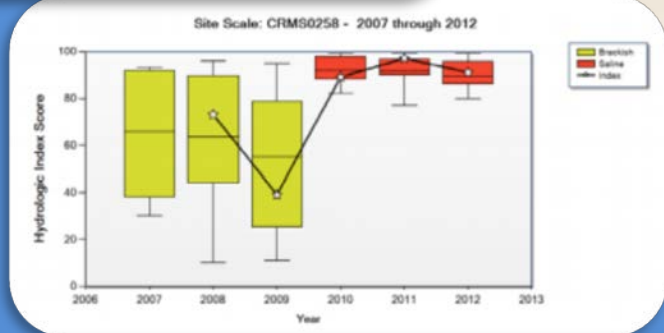




Tools Menu
Classify

Type: Vegetation
Attribute: FGI
Year: 2010

Change Colors/Intervals
Range: 0 to 100
Interval: 10

Classify

Coastal Protection and Restoration Authority of Louisiana
Office of Coastal Protection and Restoration

2009 Operations, Maintenance and Monitoring Report

For

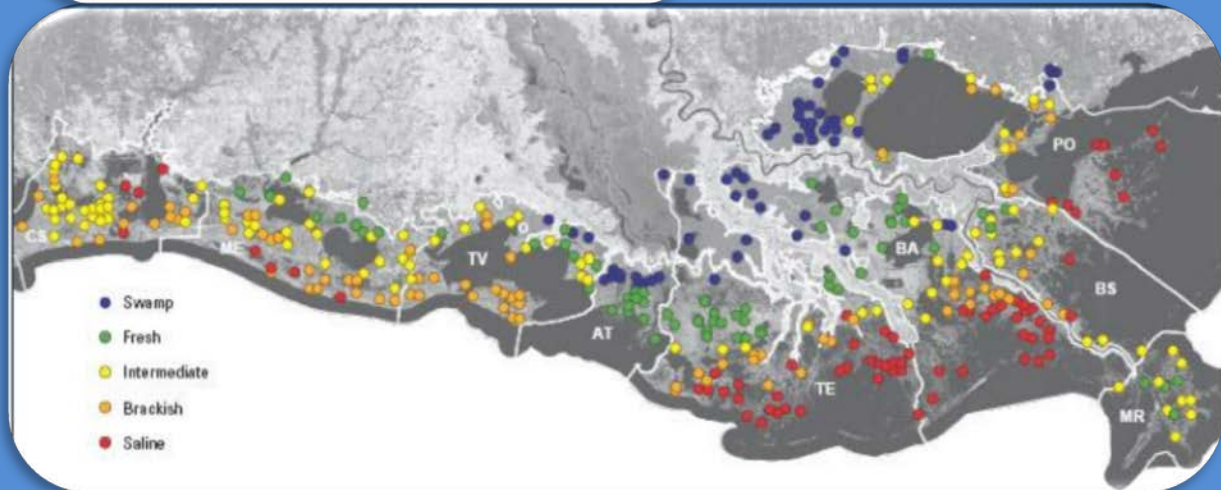
DELTA WIDE CREVASSES

State Project Number MGR-09
Priority Project List 6

August 1, 2009
Plaquemines Parish

Prepared by:
Bryan Gosman

CPRA Office of Coastal Protection and Restoration
New Orleans Field Office
CERM, Suite 309
2045 Lakeshore Dr.
New Orleans, LA 70122



Data Utilization

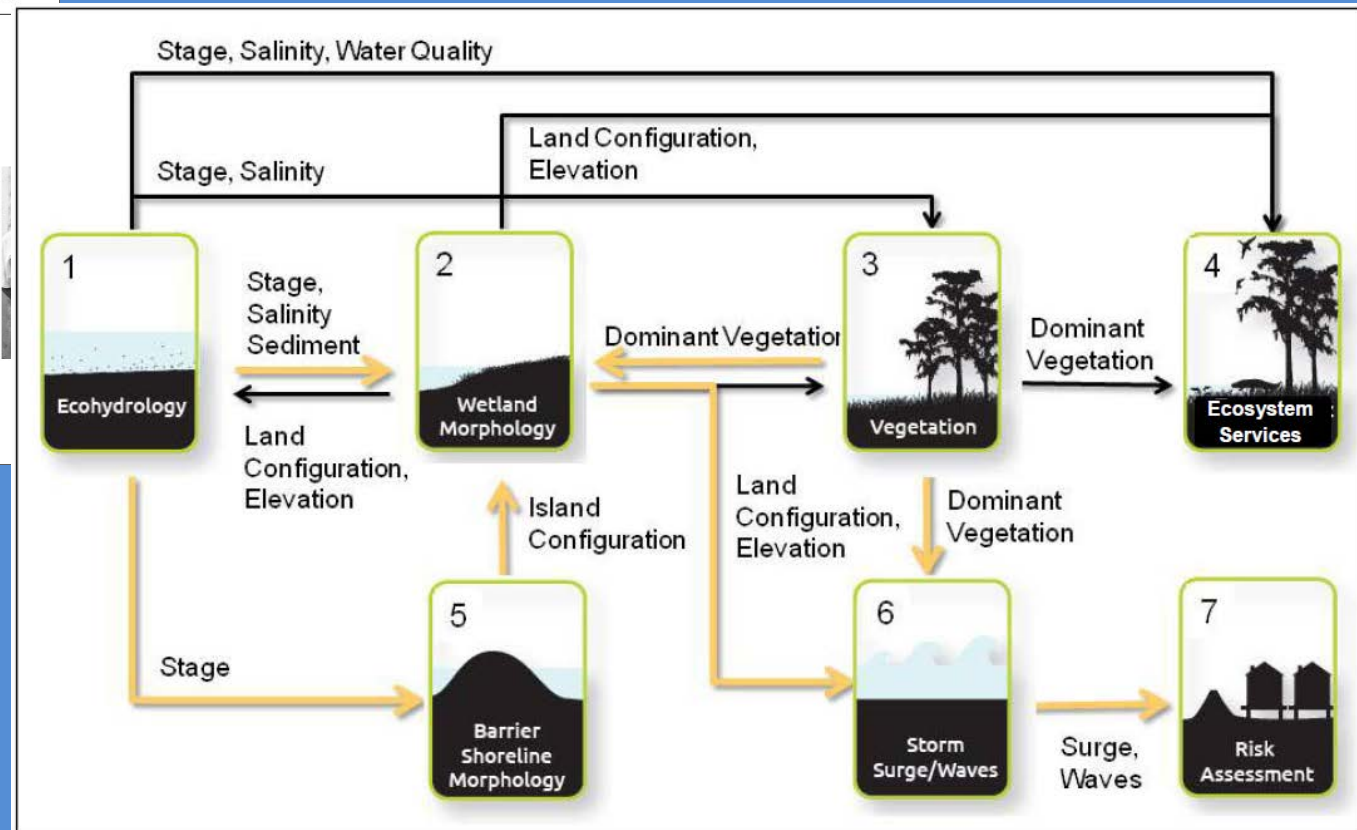
Master Plan Models

State of Louisiana
The Honorable Bobby Jindal, Governor



Louisiana's Comprehensive
Master Plan for a Sustainable Coast

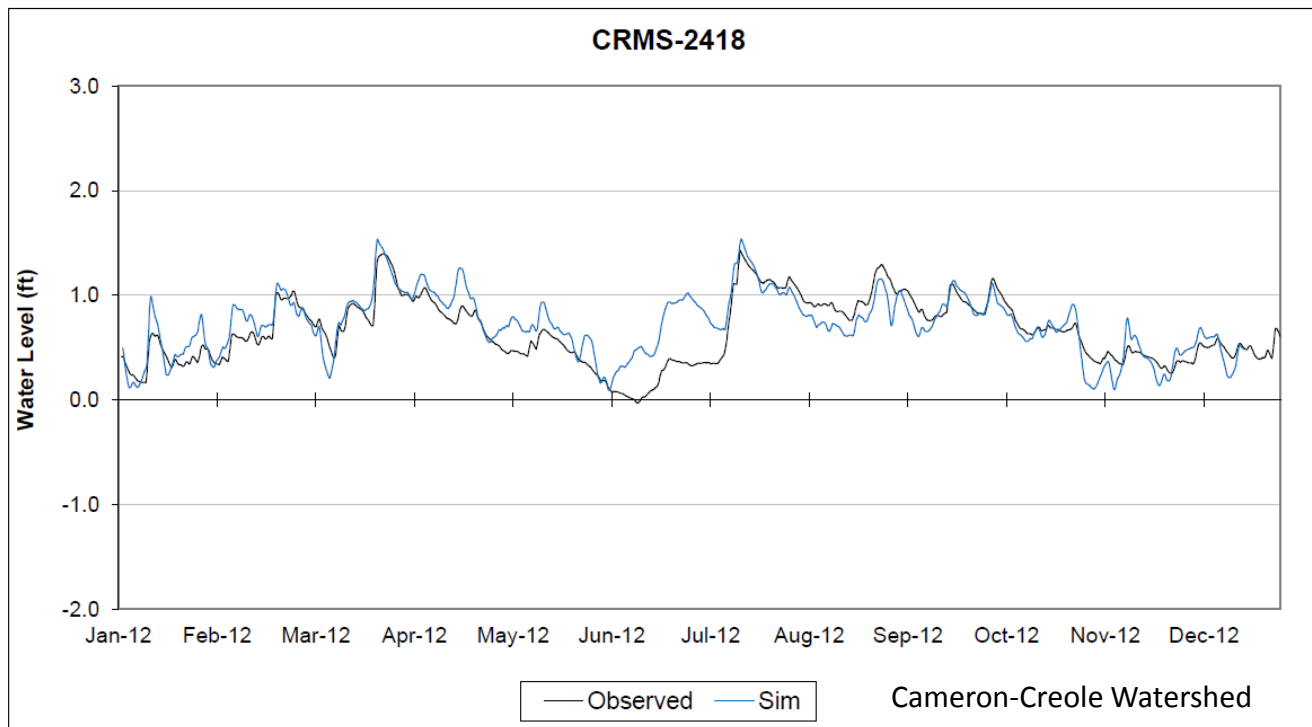
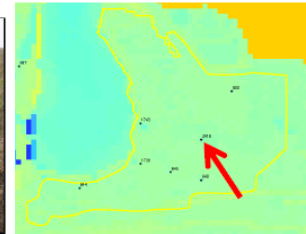
committed to **our coast**



Data Utilization

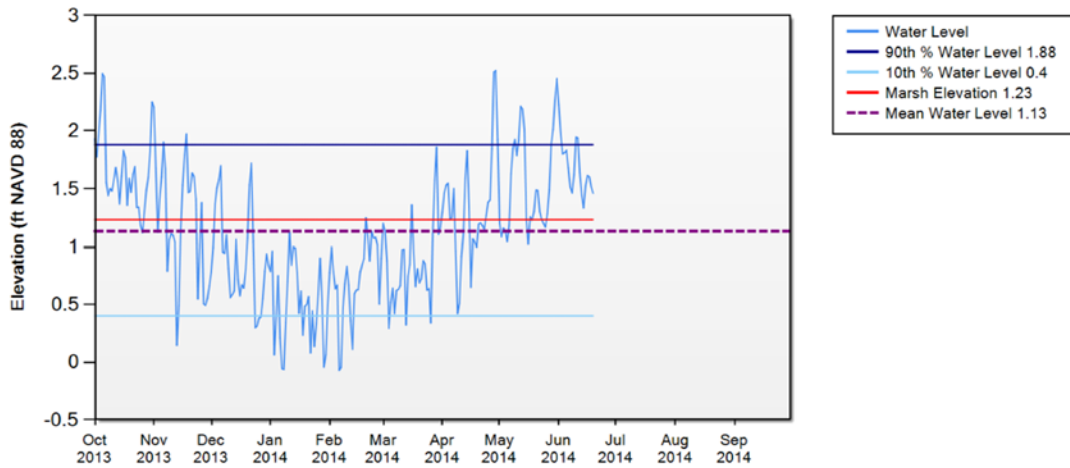
Project Planning: hydrologic models

CRMS-2418



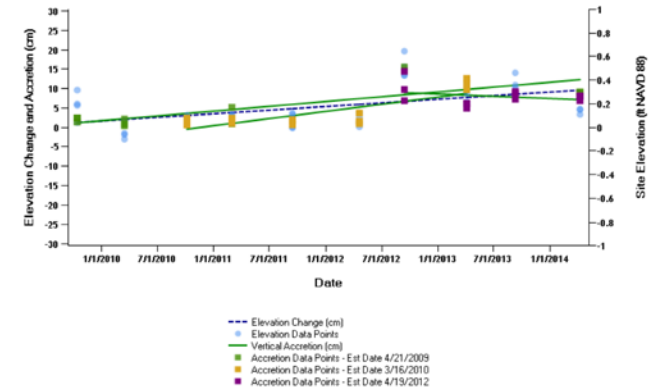
Data Utilization Engineering & Design:

Water Level Range - CRMS4103-H01 2014



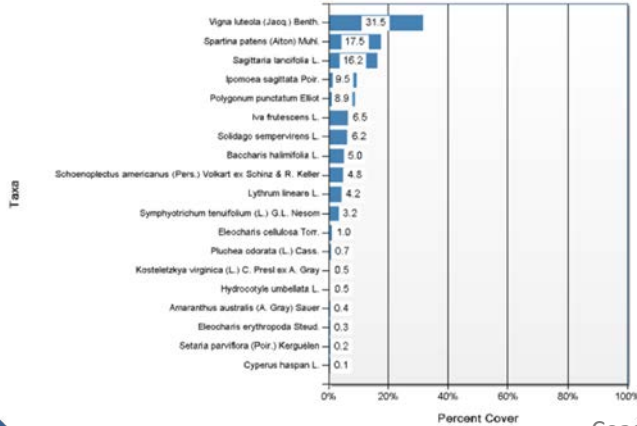
Data Source: Continuous Daily Observations

CRMS4103
Elevation Change and Vertical Accretion (cm)



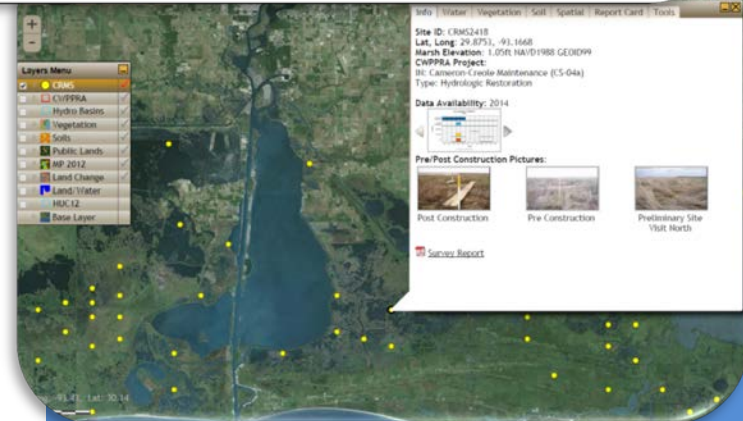
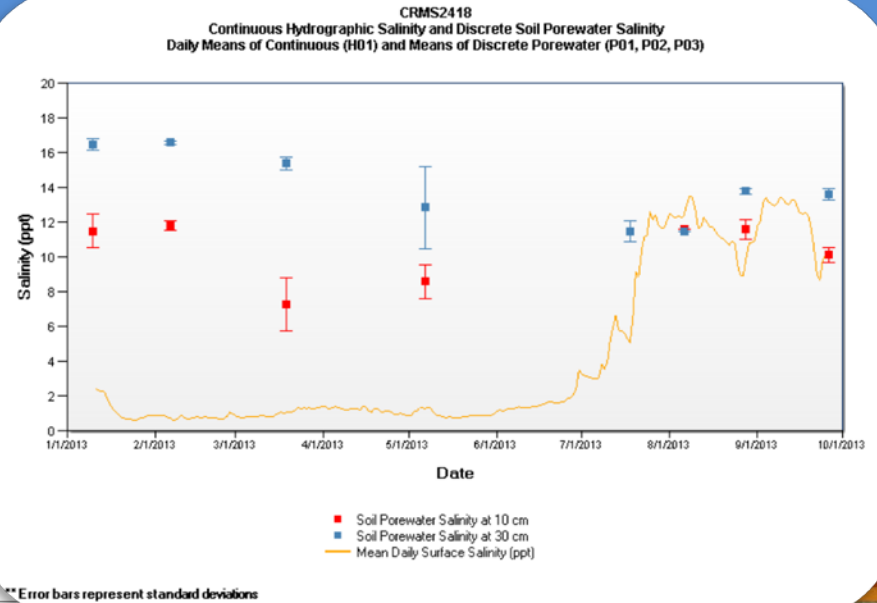
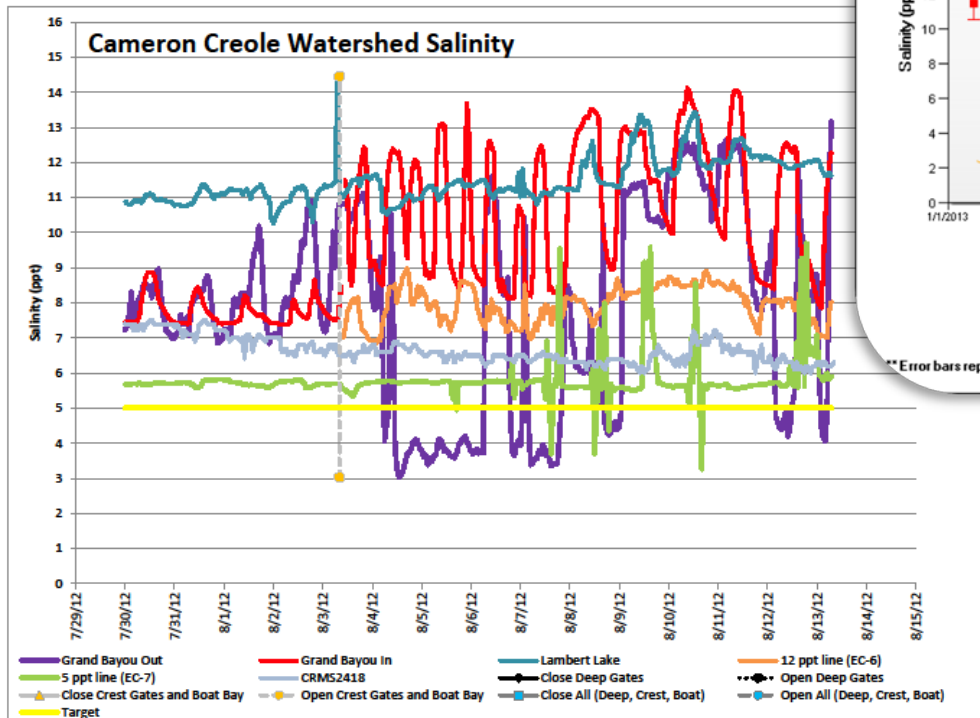
Rates:
Elevation Changes = 1.86 cm/yr
Vertical Accretion Est Date 4/21/2009 = 2.48 cm/yr
Vertical Accretion Est Date 3/16/2010 = 3.69 cm/yr
Vertical Accretion Est Date 4/19/2012 = -1.15 cm/yr

Herbaceous Marsh Vegetation Data
Site CRMS4103 - All Plots
Sample Date 08/20/2013



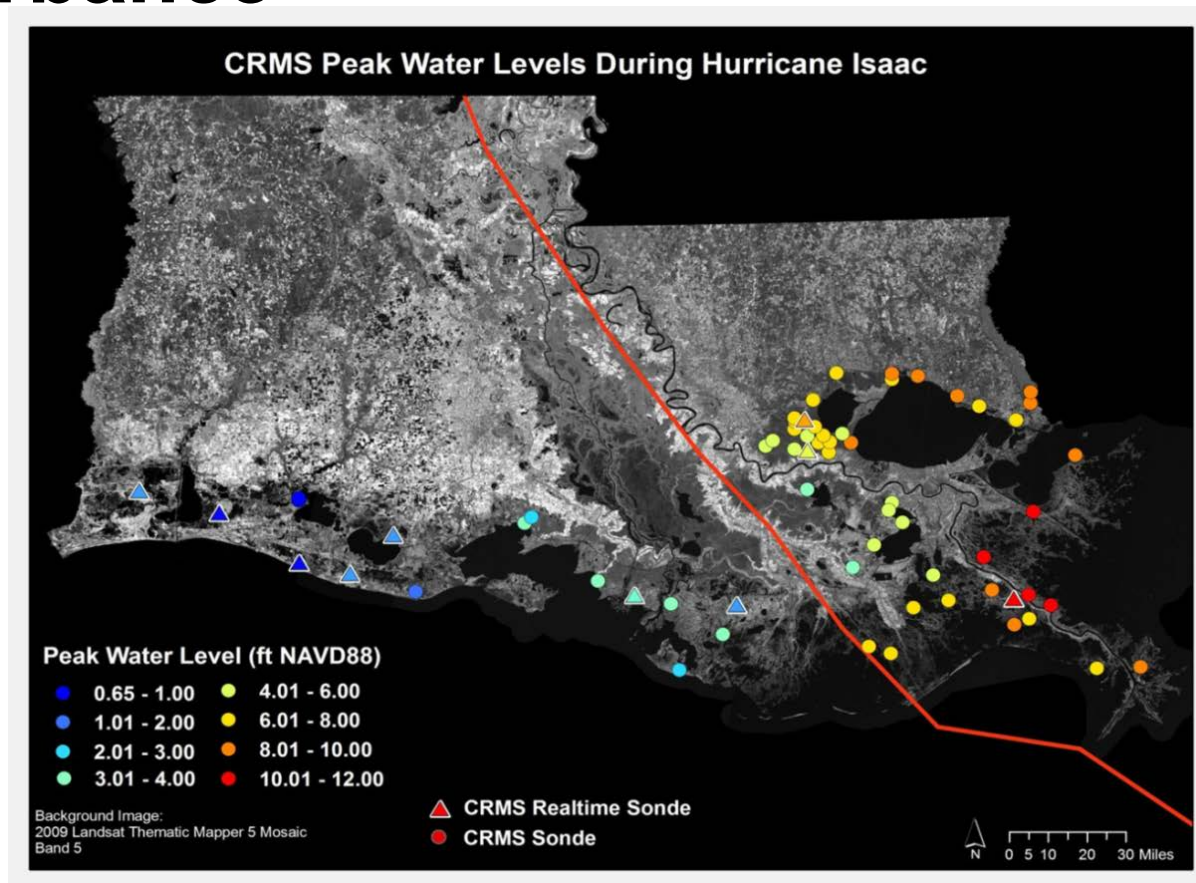
Data Utilization (operation, maintenance, monitoring, and adaptive management)

OMMAM and Performance Assessment



Data Utilization

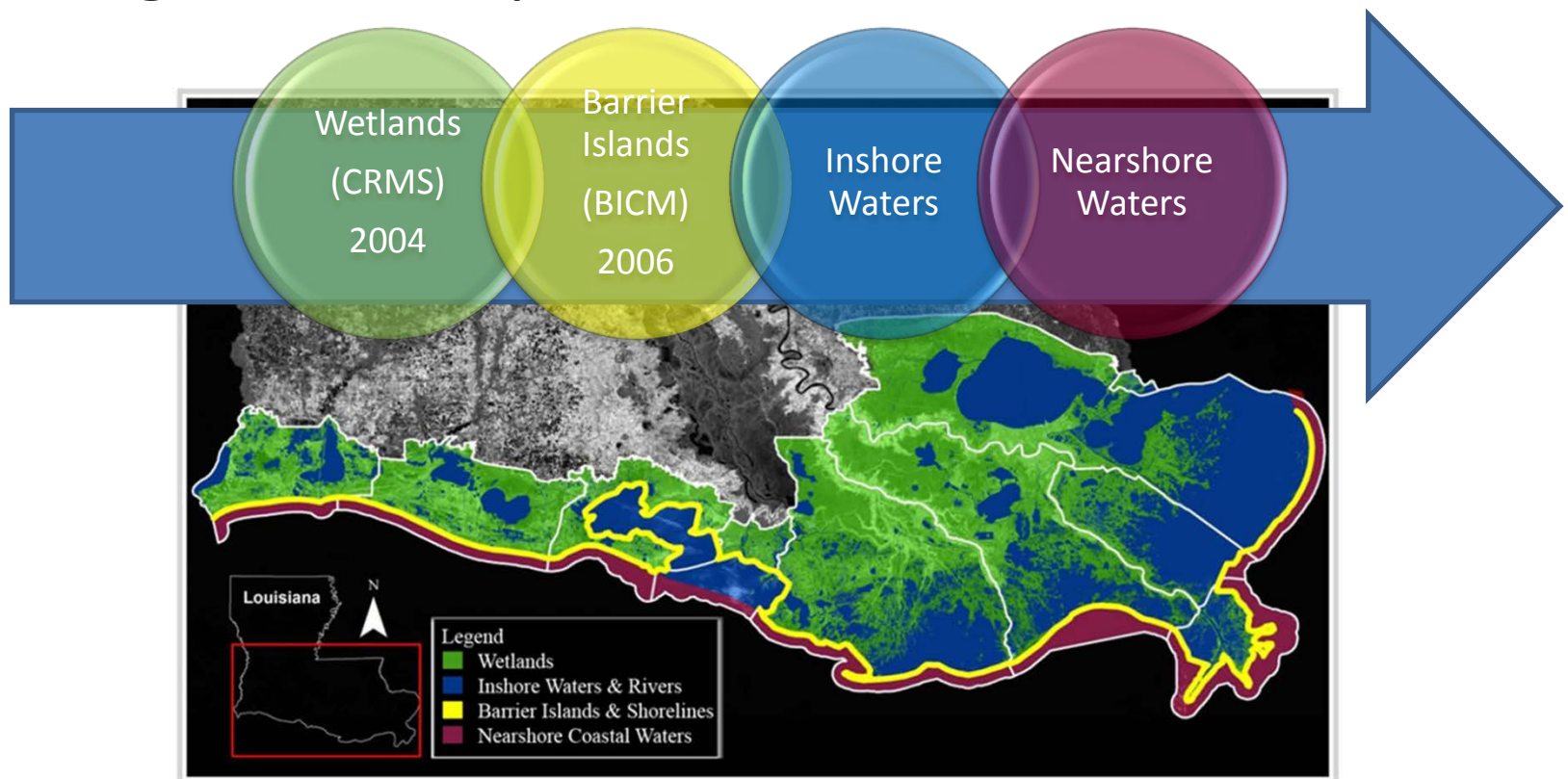
Damage Assessment: following a major disturbance



Damage assessments underway when sites are accessible

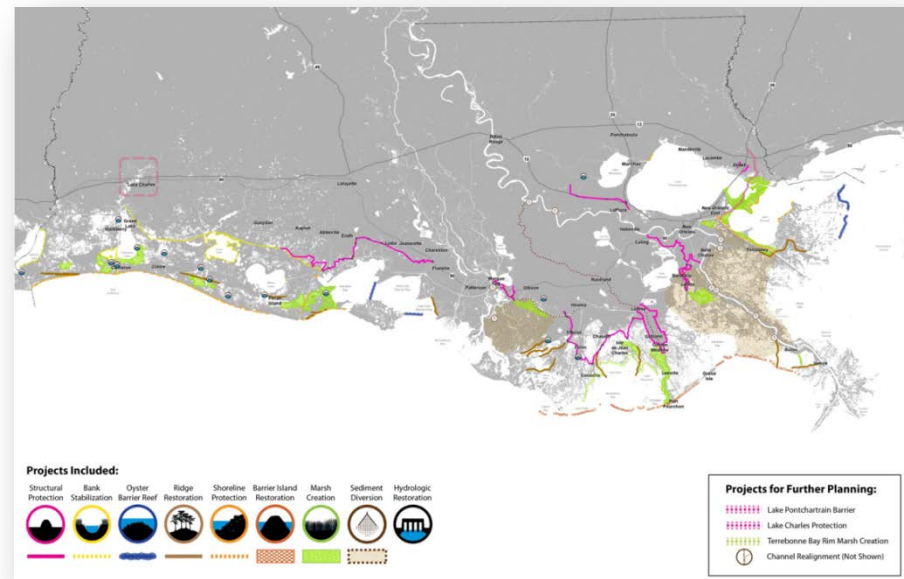
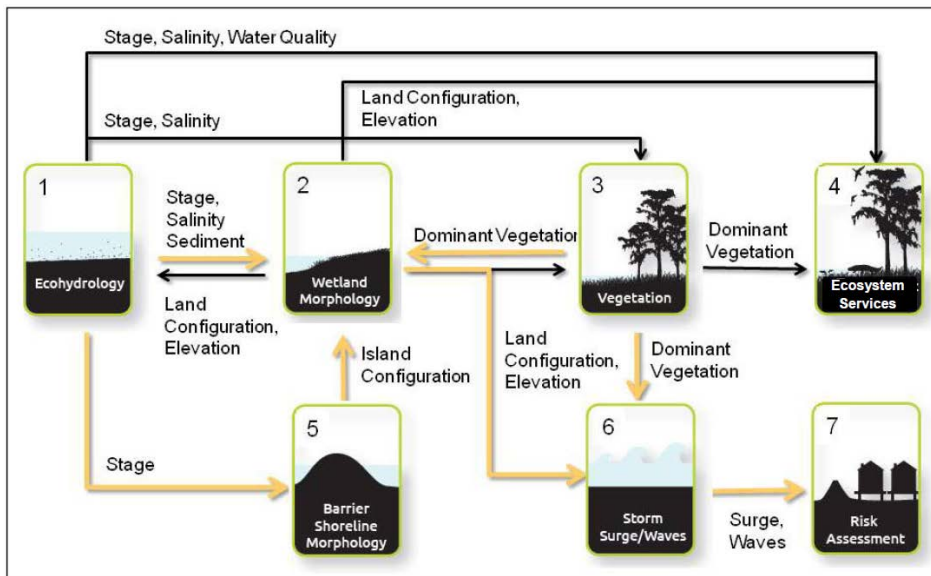
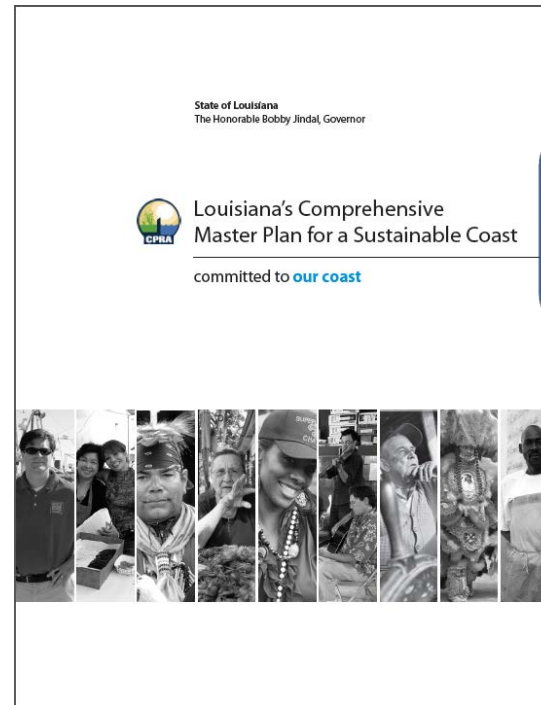
Original Concept for *System-Wide Assessment and Monitoring Program*

- Proposed in LCA program in 2004
- Original concept was restoration-centric



Data Needs

- Support Master Plan tools
- Resolve Uncertainties
- Actively and adaptively manage projects and programs
- Evaluate effectiveness of projects and collective effects
- Evaluate socio-economics
- Evaluate risk reduction



Atmospheric

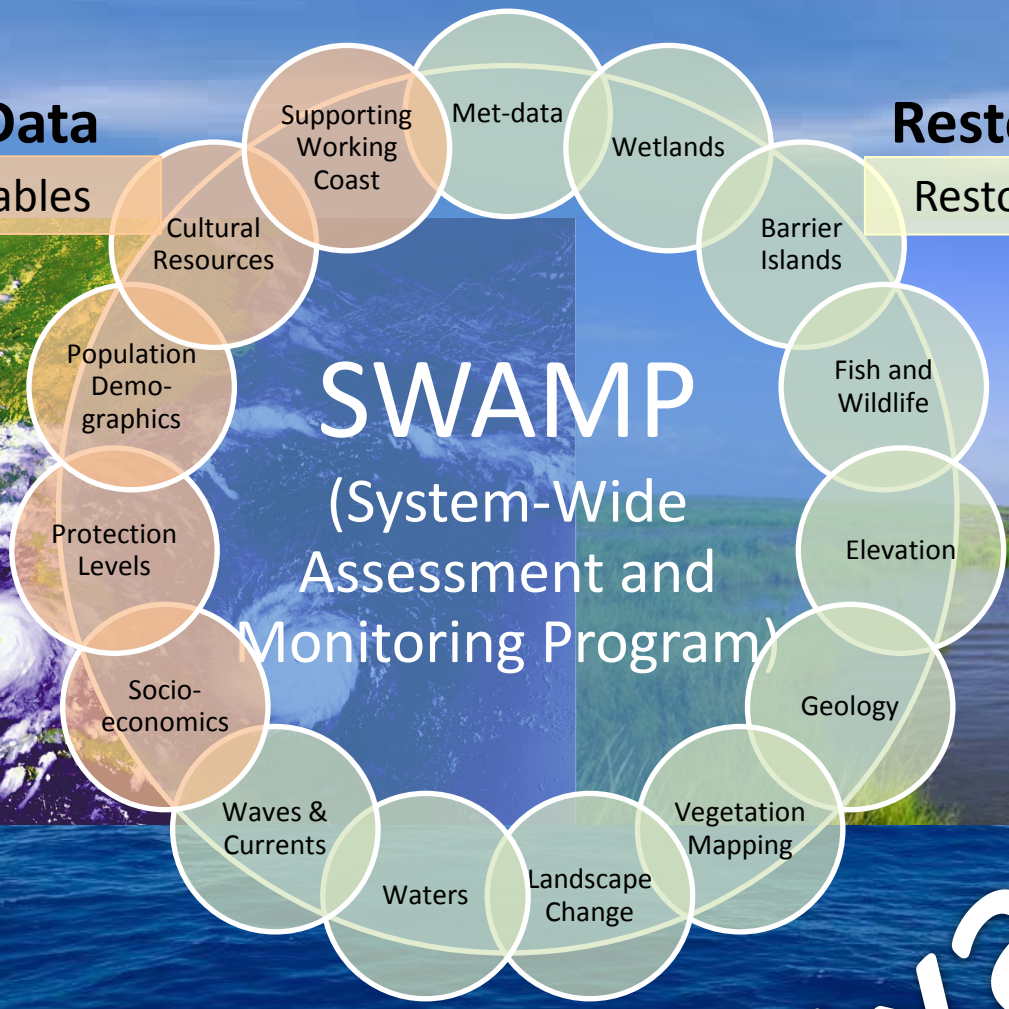
Protection Data

Restoration Data

Protection Variables

Restoration Variables

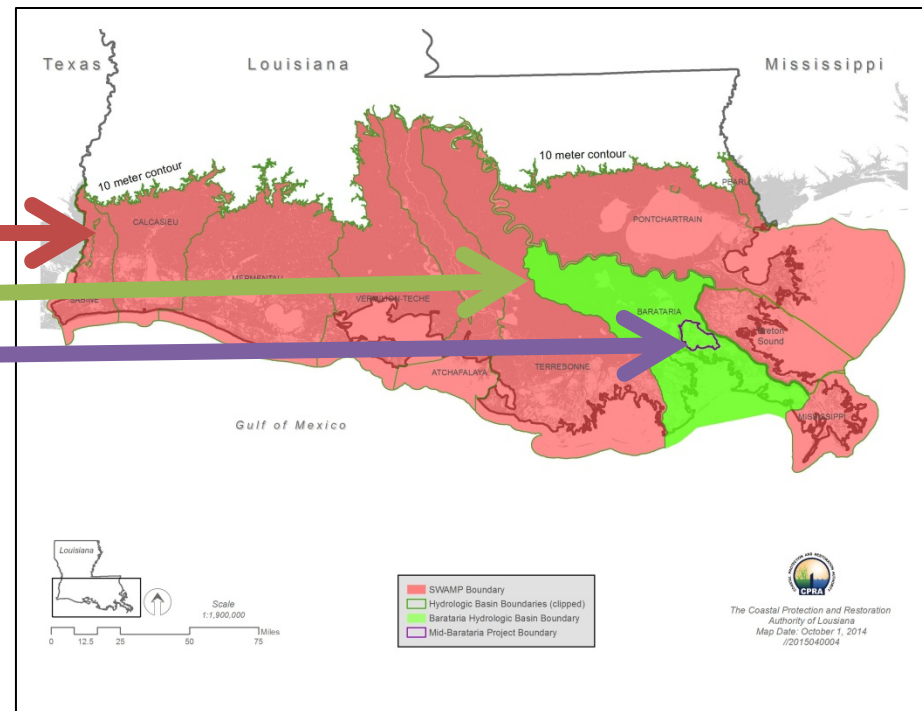
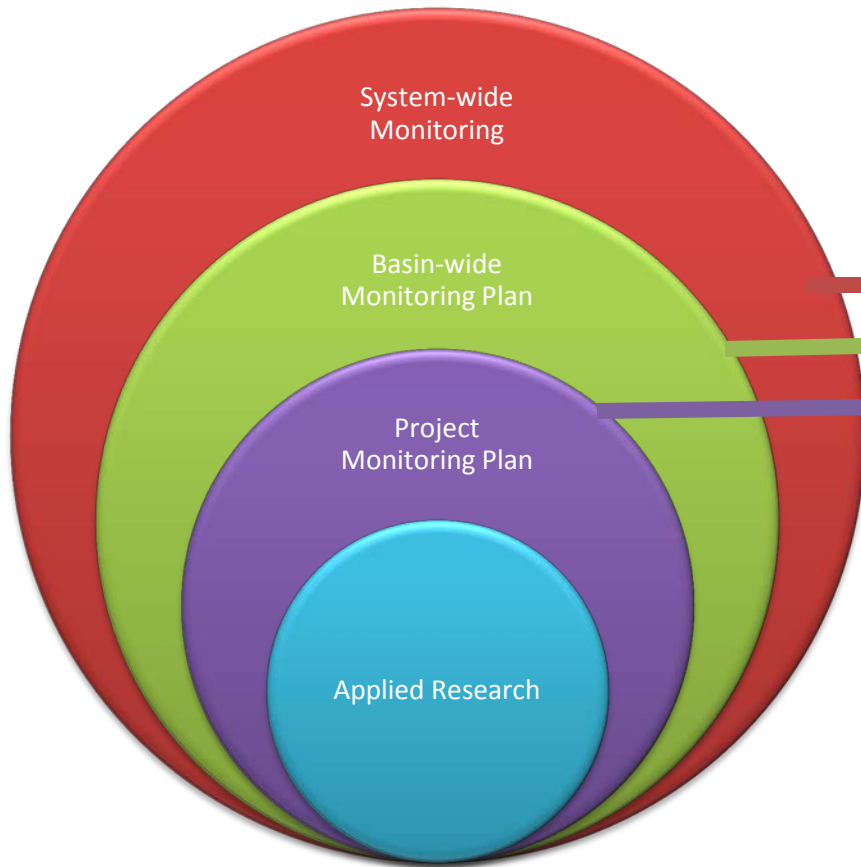
SWAMP
(System-Wide
Assessment and
Monitoring Program)



Oceanic

Example

SWAMP Scalability



SWAMP Milestones

1. Develop a **framework** that:
 - Identifies the key parameters necessary for understanding the overall coastal system (**natural and built**) and supporting the coastal protection and restoration program.
2. Develop an **inventory** of ongoing/active monitoring efforts.



SWAMP Framework: Coastal Drivers

What are the drivers that cause change to the coastal environment?

Human Activities

Restoration

Ecosystem Utilization

System Processes

Atmospheric & Oceanic Processes

Geological Processes

Groundwater & Surface Water Inputs

Land

Water

Atmosphere

Groundwater

River

Fish and
Wildlife

System Responses

(from: Water Institute, 2014)

Agencies Currently Collecting Data

State Agencies

CPRA

LDWF

LDEQ

LDNR

DHH

LED

GOHSEP

Dept. Insurance

Federal Agencies

USGS

USACE

NOAA

USFWS

EPA

NRCS

FEMA

US. Census Bureau

Other

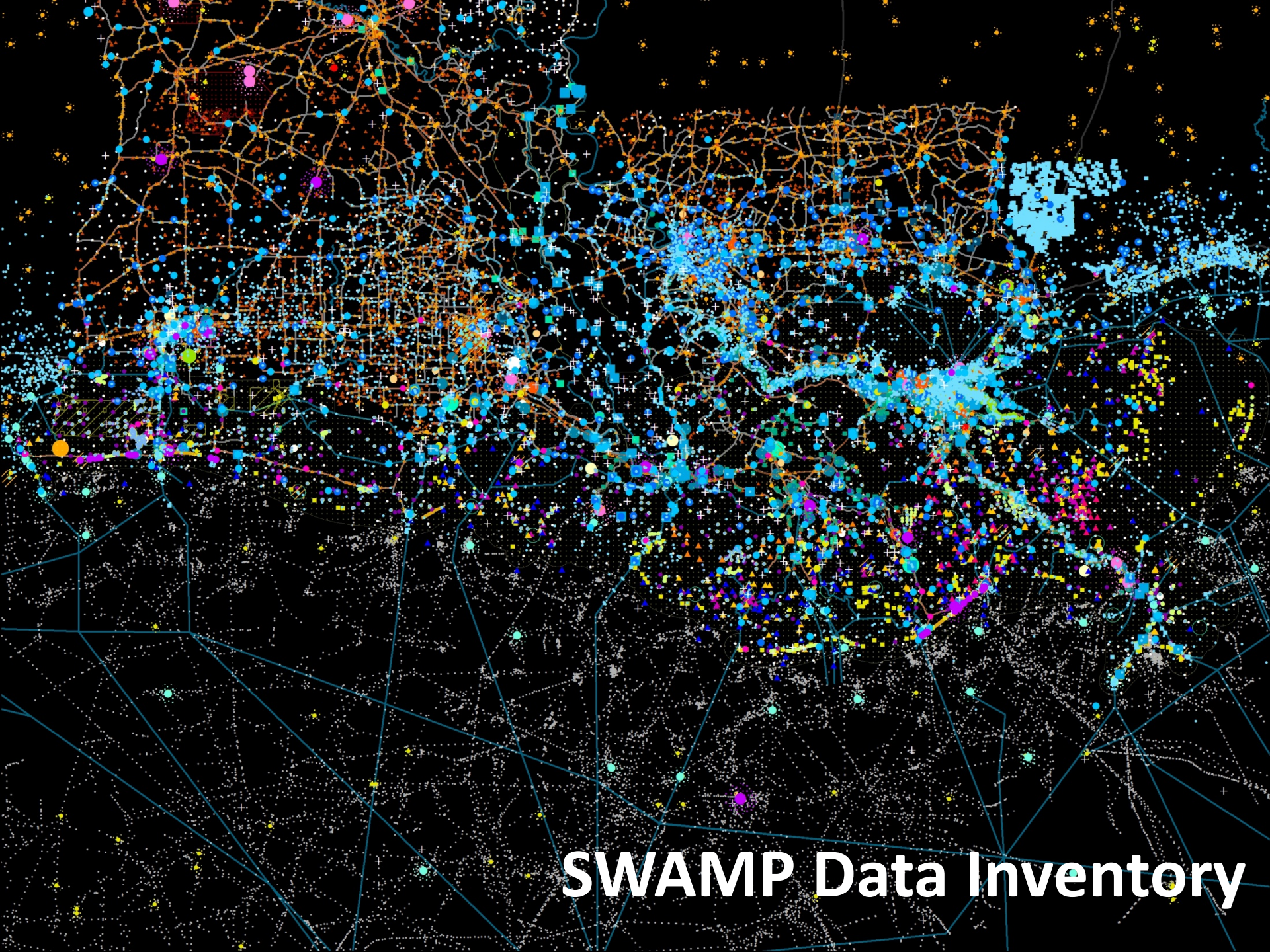
National Audubon
Society

Lake Pontchartrain Basin
Foundation

The Nature Conservancy

Levee Districts

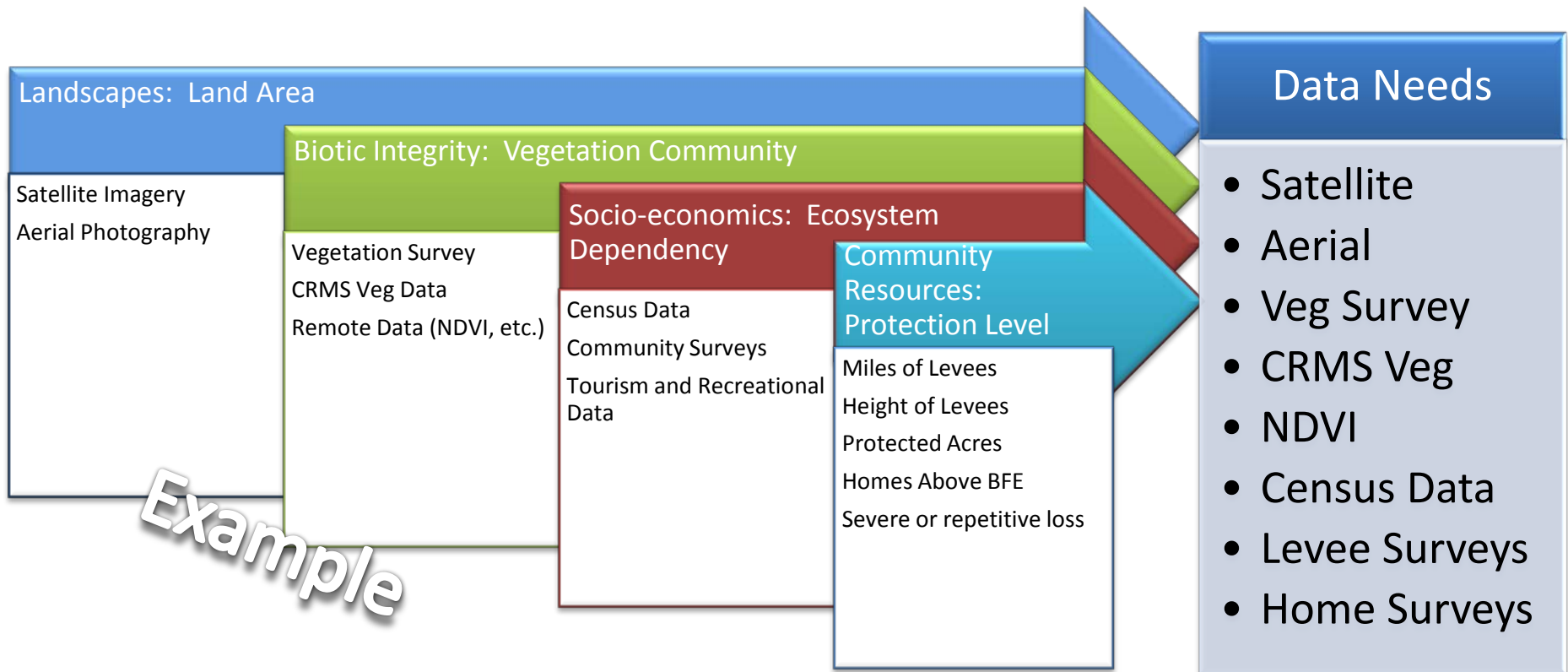
Local Governments and
Communities



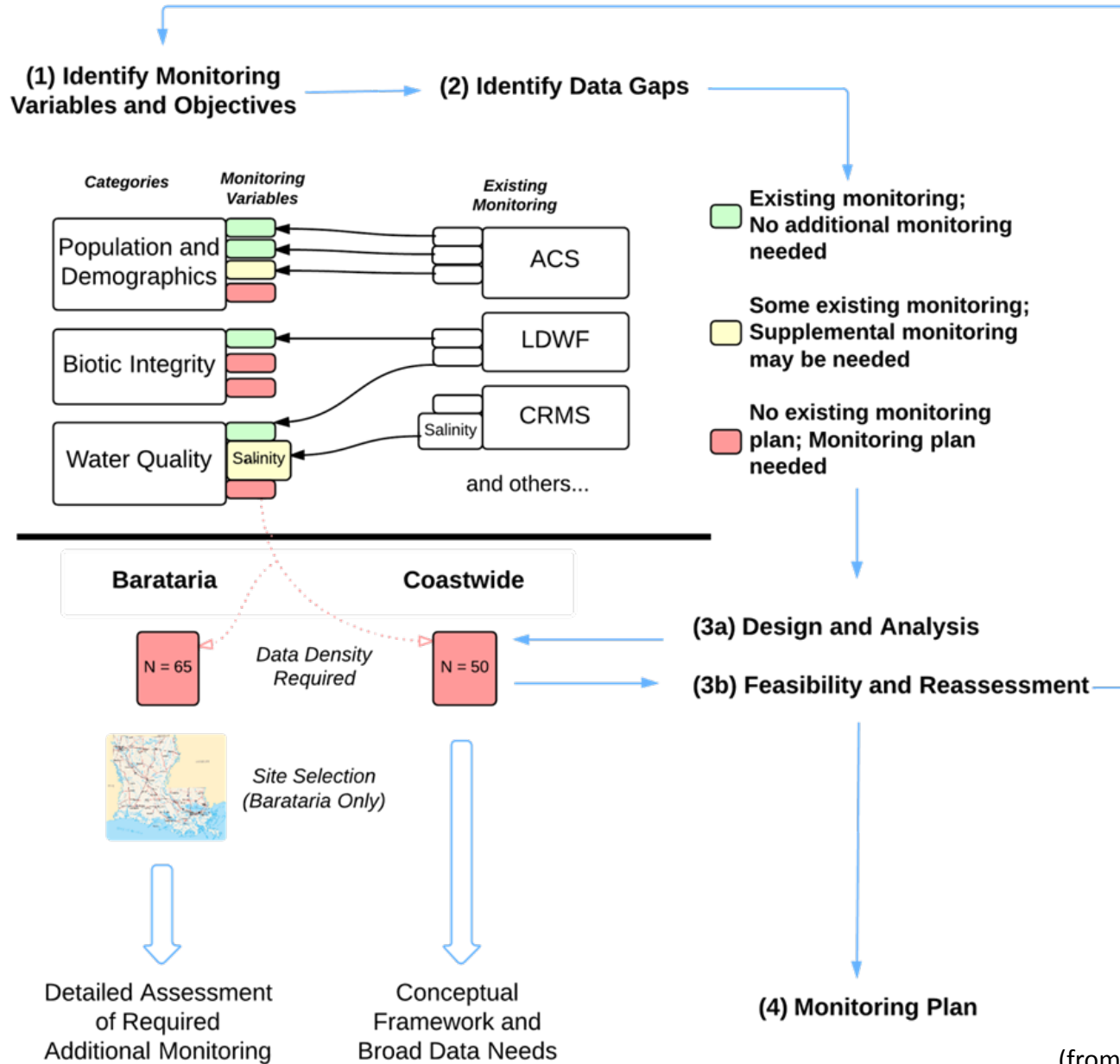
SWAMP Data Inventory

What do we need?

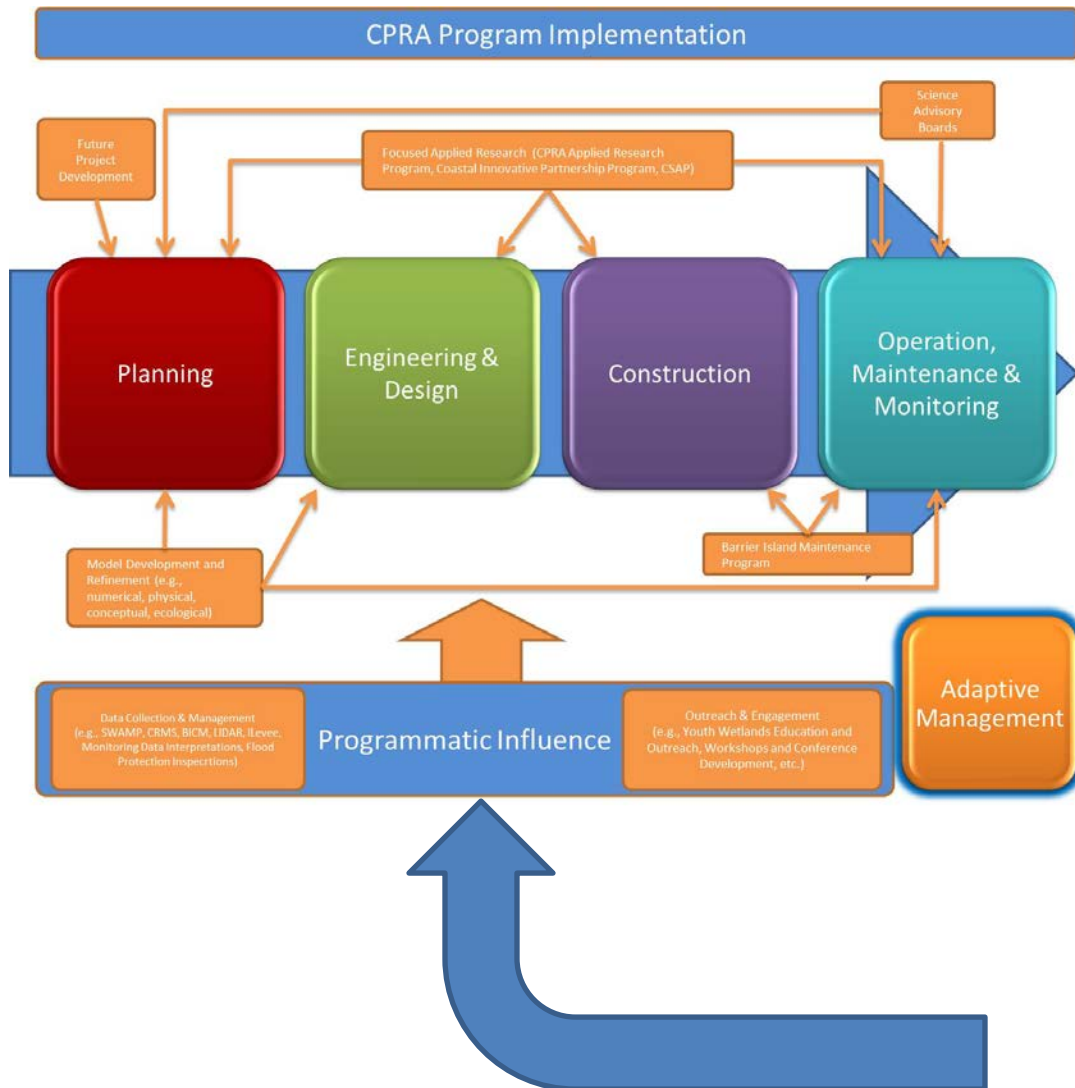
- What data do we need to address CPRA's objectives



SWAMP Development Process

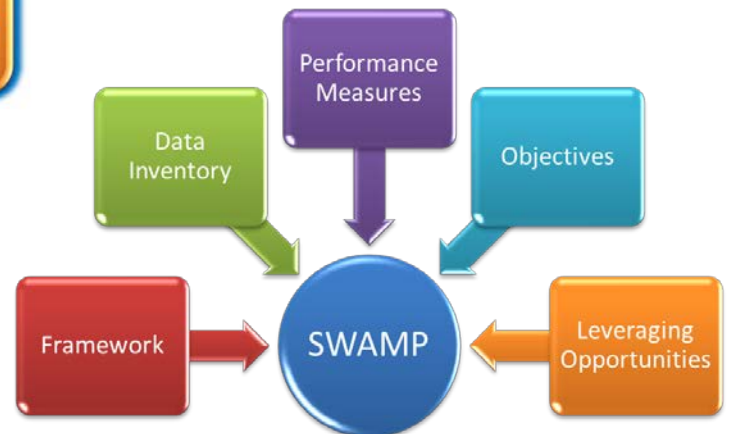


SWAMP & Adaptive Management



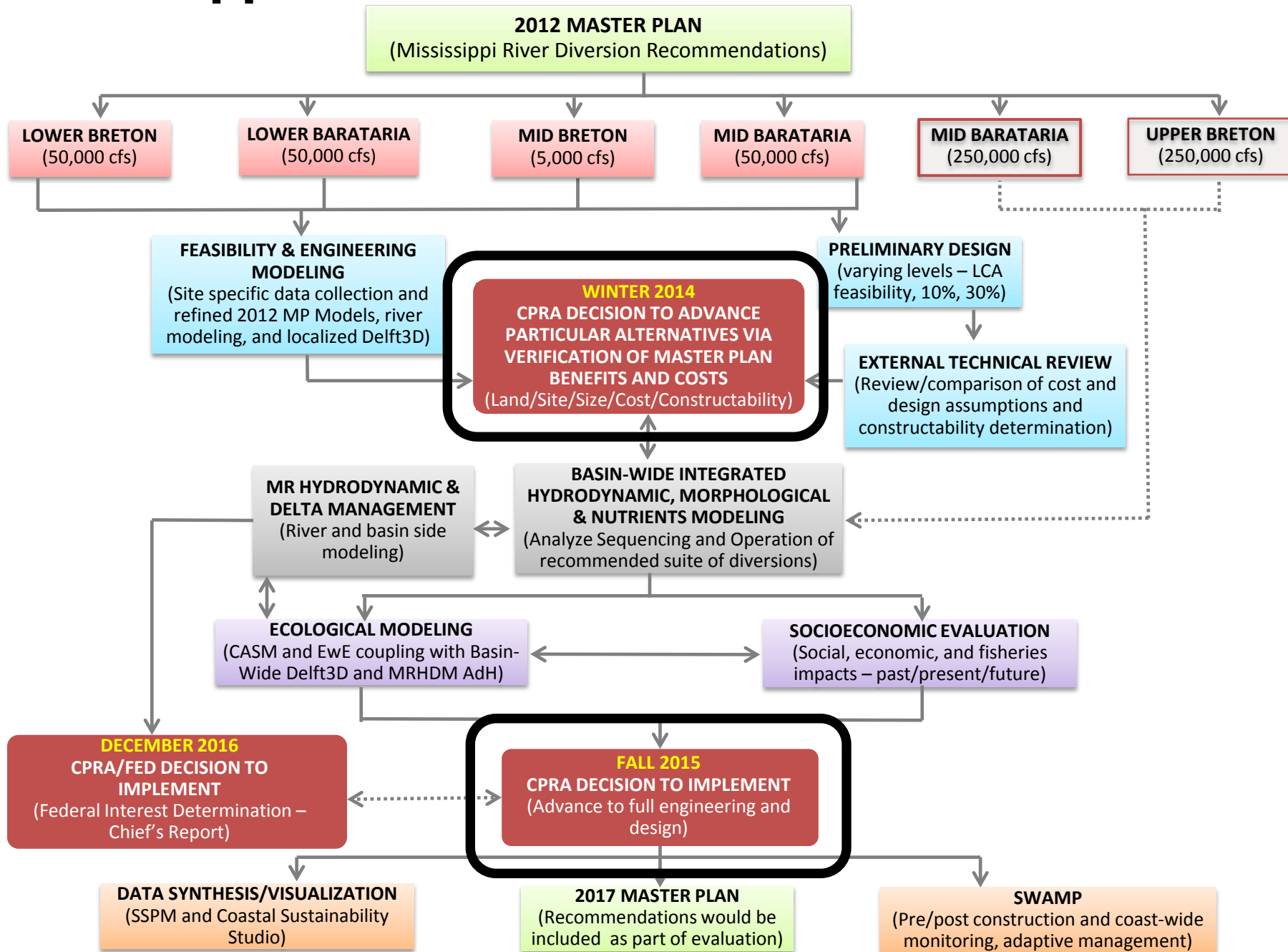
SWAMP supports:

- Adaptive Management
- Planning
- E&D
- Construction
- O&M
- Project/Program assessment
- Focused Applied Research
- Support predictive models
- Informed Decision-making

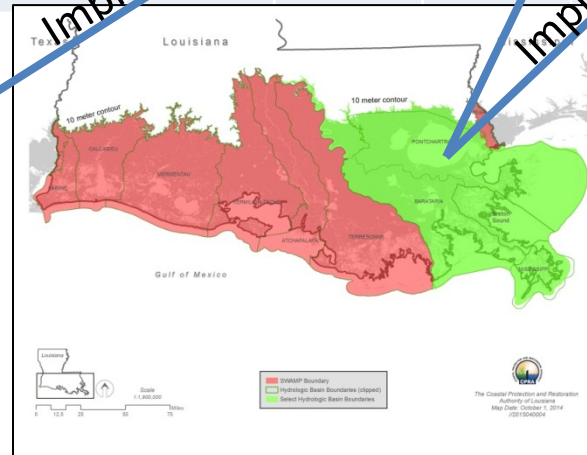
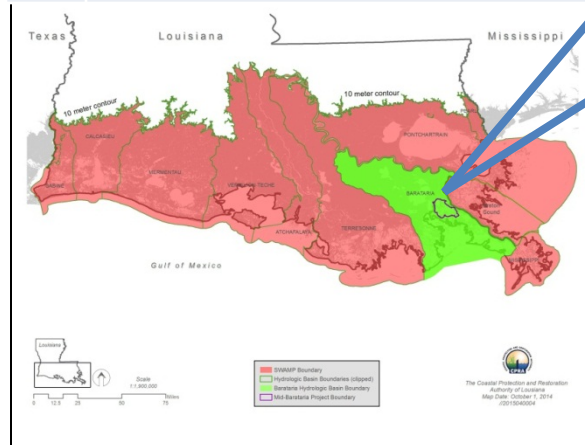


Mississippi River Sediment Diversions: Process

DIVERSIONS ADVISORY PANEL, DIVERSIONS SUB-COMMITTEE & PUBLIC ENGAGEMENT



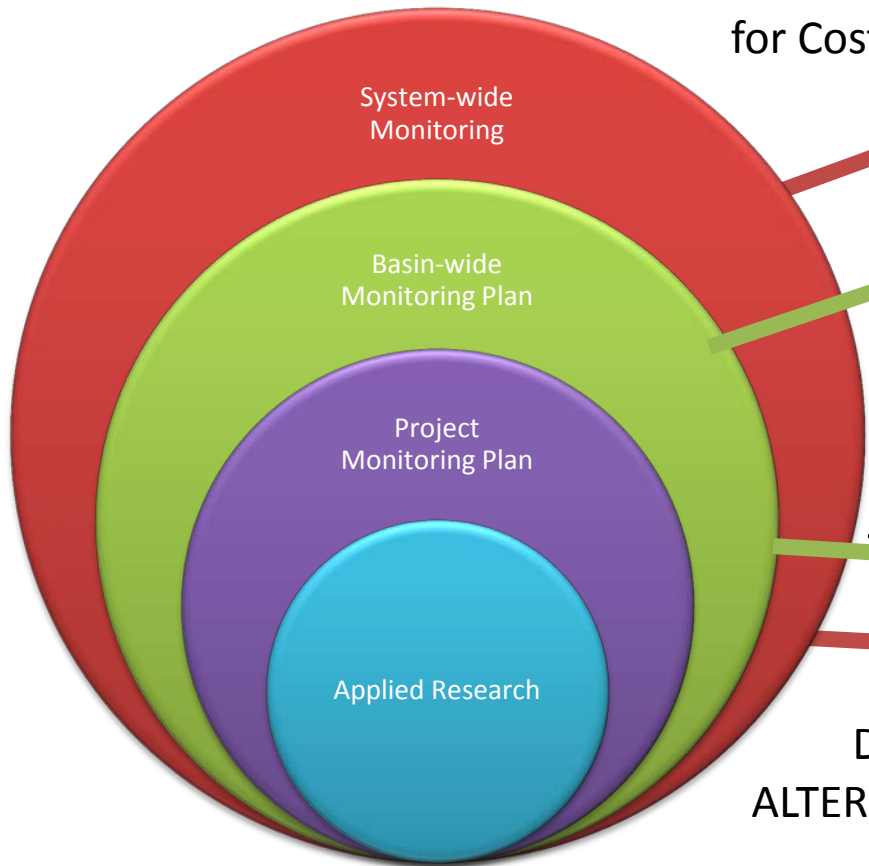
SWAMP DESIGN & IMPLEMENTATION TIMELINE		2014 Q4	2015 Q1	2015 Q2	2015 Q3	2015 Q4	...
Adaptive Management (living doc)							
SWAMP Design							
	Coastwide Framework						
	BA Pilot Plan		BA diversions *				
	BS, PO, MR Plans		BS PO diversions *				
	Add'l Basins						
SWAMP Implementation							
	BA Pilot Plan						
	BS, PO, MR Plans						
	Add'l Basins						



Design
Implement

Design
Implement

SWAMP Design/Implementation Timeline

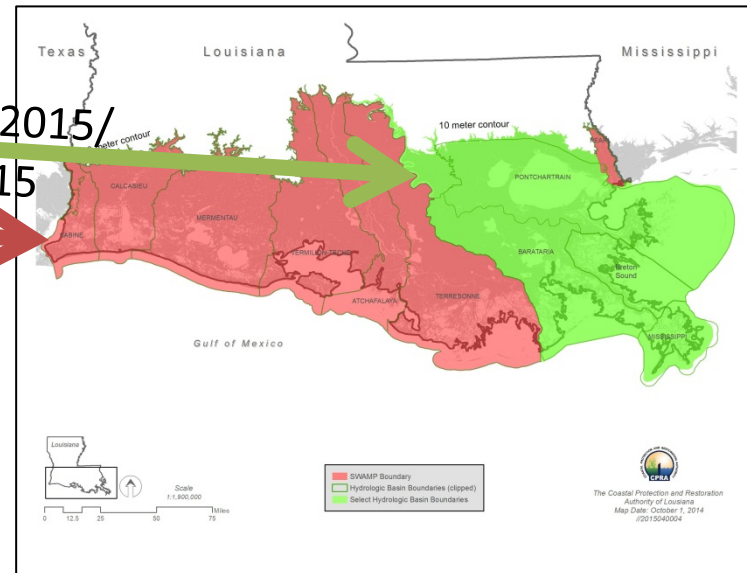
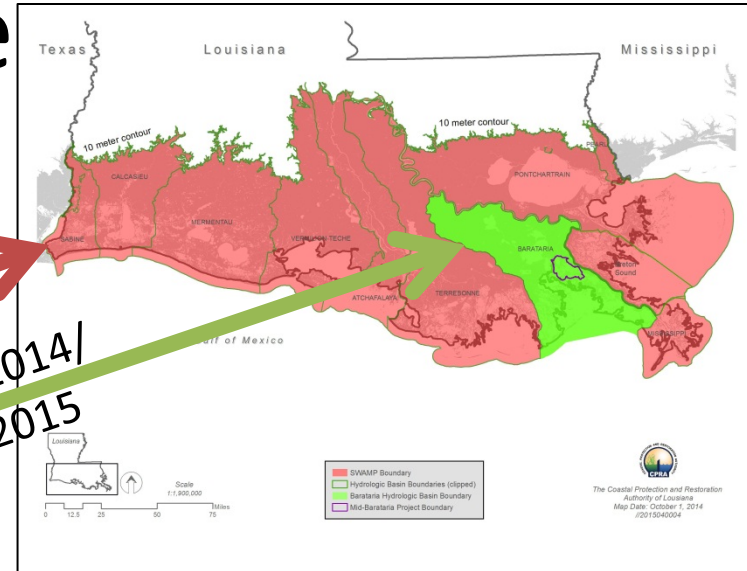


Decision: ALTERNATIVES
for Cost/Benefit

Winter 2014/
Spring 2015

Summer 2015/
Fall 2015

Decision:
ALTERNATIVES
for E&D



System-Wide Assessment and Monitoring Program



Landscape Topography



Weather & Climate



Hydrogeomorphology



Water Quality



Biotic Integrity



Protection and Socioeconomics

Questions?

State of Louisiana
The Honorable Bobby Jindal, Governor



Louisiana's Comprehensive
Master Plan for a Sustainable Coast

committed to **our coast**



Stay Tuned



More to Come

Richard.Raynie@LA.gov