



UNITED HOUMA NATION *TRIBAL RESILIENCE PLAN*

PHASE 4 ECONOMIC DEVELOPMENT

The UHN will build capacity for economic development.

To increase economic resilience, the UHN is focusing on economic growth and opportunity by **building generational wealth through workforce training and UHN-owned businesses**. Improvements to the Central Community Resilience Hub will incorporate spaces in the facility designed to support and develop small businesses (e.g., office spaces, coworking spaces and rental spaces, trainings and programming, continuity planning), as well as UHN administrative offices to keep the Tribe functioning.

Improvements at the Central Hub will do more than provide enhanced services during disasters – **it will explicitly serve UHN citizens during blue skies specifically to address issues related to the severity and frequency of disaster impacts** (e.g., health, education, economic security). The programming that these enhancements support will foster generational wealth building through workforce development and training, leadership development, provision of foundational economic resources, and education across a variety of topics and skills.



From left to right: Donation of the Central Hub, which will support economic development activities such as cultural and educational classes (center), as well as workforce training and formation of UHN-owned businesses, particularly in construction (right).



FUTURE MUSEUM + CULTURAL CENTER

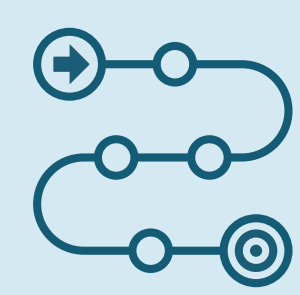
The UHN also recently acquired the Daigleville School in Houma, which is on the National Register of Historic Places. During segregation, Terrebonne Parish had a tripartite system with separate Black, Native American, and White schools and the Daigleville School was the only public school to allow Native Americans to achieve a high school education. Prior to the school's opening, education for

Native Americans was only offered through the eighth grade. In addition to fortifying this facility for flood, wind, and energy resilience, UHN plans for the Daigleville School include development of a Tribal history museum and cultural center. Improvements to both the Central Hub and the Daigleville School will also allow income generation through event and office rental space.

PHASE 5 COMMUNITY-LED MIGRATION

Community-led migration will be a constantly evolving process as continued conversations, storms, and capacity building occur.

The UHN will undertake two critically important foundational activities:



COMMUNITY-LED MIGRATION STRATEGY DEVELOPMENT

The UHN is facing rapid land loss and Tribal citizens are exposed to more frequent and damaging disasters along with the loss of their traditional lands. Individual Tribal citizens are choosing to respond to this land loss in different ways, with some already migrating further inland. To serve Tribal citizens who wish to move to higher ground while maintaining cultural and community connections, the Tribe will begin the process of **proactively strategizing with its members across**

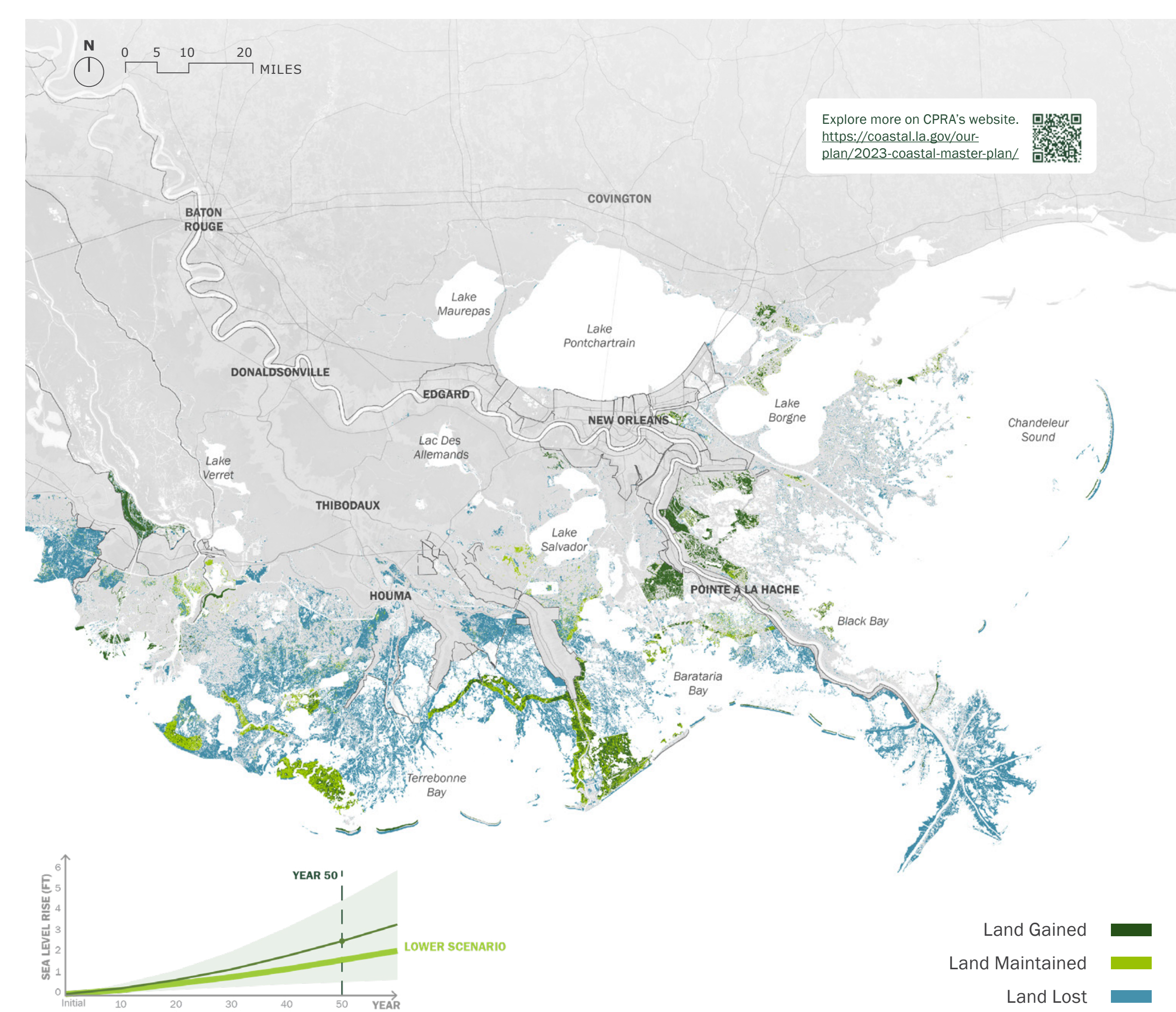
all six parishes about migration into the northern portions of Terrebonne and Lafourche parishes. Tribal citizens will lead this planning assisted by experts in community planning and resilience that are also familiar with Tribal contexts. Upon completion, the community-led migration strategy will be integrated into an overall 10-year Tribal Master Plan.



ESTABLISHING LAND STEWARDSHIP CAPACITY AND MECHANISMS

The UHN will undertake community learning on how land trust models can be integrated into the Tribe's capacity to support the community led migration strategy. Land trusts are an important legal tool that provide an opportunity for Tribes to steward lands for the purpose of conservation, recreation, natural protection, and to exercise traditional and customary rights and practices. A land trust would enable UHN to support Tribal citizens who are interested in migrating inland, but do not wish to see their land developed or sold to another person who could be put into harm's way. Further, the stewardship the UHN would provide would enhance floodplain management, habitat restoration, and other ecosystem services.

A community land trust model provides an opportunity for the land to be stewarded in perpetuity by the Tribe, while also allowing Tribal citizens to build generational wealth, set standards for resilient building practices, and ensure long-term availability of affordable, quality housing and services for the Tribe. Community land trusts could serve as a successful mechanism for supporting cohesive, intentional migration into northern Terrebonne and Lafourche parishes.

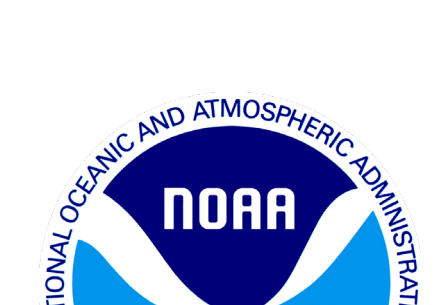


50 year land change map assuming full implementation of the 2023 Coastal Master Plan and lower levels of sea level rise. From the 2023 Coastal Master Plan, Coastal Protection and Restoration Authority.

Many funders have contributed to the success of this plan.
Key partners for implementing Phase 5 include:



COMMUNITY
RESILIENCE
CENTER
AT THE WATER INSTITUTE



GREATER
NEW ORLEANS
FOUNDATION

M | SEAS SCHOOL FOR ENVIRONMENT
AND SUSTAINABILITY
UNIVERSITY OF MICHIGAN

Law Offices of
Michael J. Billiot, LLC.